

**CAPACITY / WEIGHTS:**

King pin:	16,0 ton
Axles:	27,0 ton
Gross trailer weight:	43,0 ton
Unladen weight:	4,8 ton
Pay load:	38,2 ton

**CHASSIS FROM HIGH STRENGTH STEEL**

The chassis consist of a 3-part telescopic central beam. On this beam are welded several twist lock cross beams in closed construction. The chassis is made of elastic high strength steel (SSAB Domex).

With the central beam the chassis is extremely torsion stiff, and very stable. In standard execution you can load:

- 1x 20' (not extended)
- 2x 20'
- 1x 40' with tunnel (2 axle positions for a correct weight distribution).
- 1x 45'

Containers without tunnel (30', 40', 13,60m): optional

**GOOSENECK**

The bottom side of the gooseneck (thickness only 124 mm) is as high as the top side of the chassis (1,18m, optional 1,11m).

**AXLES**

Axles: 3 fixed axles with SAF drum brakes  
 Suspension: Air suspension with manual raise/lower valve.  
 Steel wheels with A-mark tyres, 6x 385/65R22,5 160 J.

**BRAKE SYSTEM**

2 line air system and 7 pin socket, EBS brake system with RSS/ESP from Wabco or Knorr. Parking brake with Tristop® cylinders.

**ELECTRICS AND LIGHTS**

24 Volt electric light system including 4 chamber light clusters, rear number plate lights, LED stork arm marker lights, LED side lights, 2 white LED outline marker lights on the front side, reflective marking on the sides and rear. Standard: one 15 pin socket and 2x 7 pin sockets.

**STANDARD ACCESOIRES**

- King pin 2", exchangeable.
- Locking of extendible telescopic main beam and rear part with manual locking pins.
- Low maintenance landing legs with handle and compensating feet for air suspension.
- Side guards according EG 89/297.
- Mudguards, with spray suppression mud flaps on the last axle.

**FINISH**

The chassis is completely steel blasted. The upper side is metallisated (sprayed with hot zinc). After that the chassis is painted in 2 layers: primer and finish in a standard RAL color of your choice.

The wheels are coated in silver-gray. The landing legs, air reservoir and axles are coated in black, the other mounted parts are galvanized.

**OPTIONS (more on request available)**

- Twistlock beam for central position of 20' container
- Flexilock extendible front beam for 13,6m and 45' containers
- Extra filling pieces for transport of 30', 40' en 13,60m containers without tunnel
- Toolbox left, plastic or RVS
- Lift axle(s)
- Disc brakes SAF / Mercedes-Benz
- Spare wheel carrier, spare wheel

Loading instructions for 20' containers on the Flexitrailer®

E

**EUROFLEX, 4x2 truck Legenda**

**User instruction**

- > The conditions are mentioned on the right side.
- > The weights in the chart are including the container.
- > This chart is based on equal loaden containers.

1. Define the weight of the container on the **front** part. From this point draw a line from the **left** side of the chart to the right.
2. Define the weight of the container on the **rear** part. From this point draw a line from the **bottom** of the chart upward.
3. The crosspoint gives you the instruction which axle must be **lifted**.

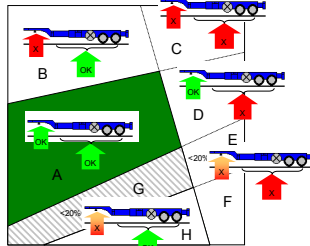
**Please take notice!** (see also the example chart, right):

- Above area B and C: **fifth wheel load too high**.
- On area C till F: **axle load too high**.
- In the area G and E: **fifth wheel load too low** to drive safety.
- In the area H and F: **fifth wheel load much too low** to drive safety.

**Conditions**

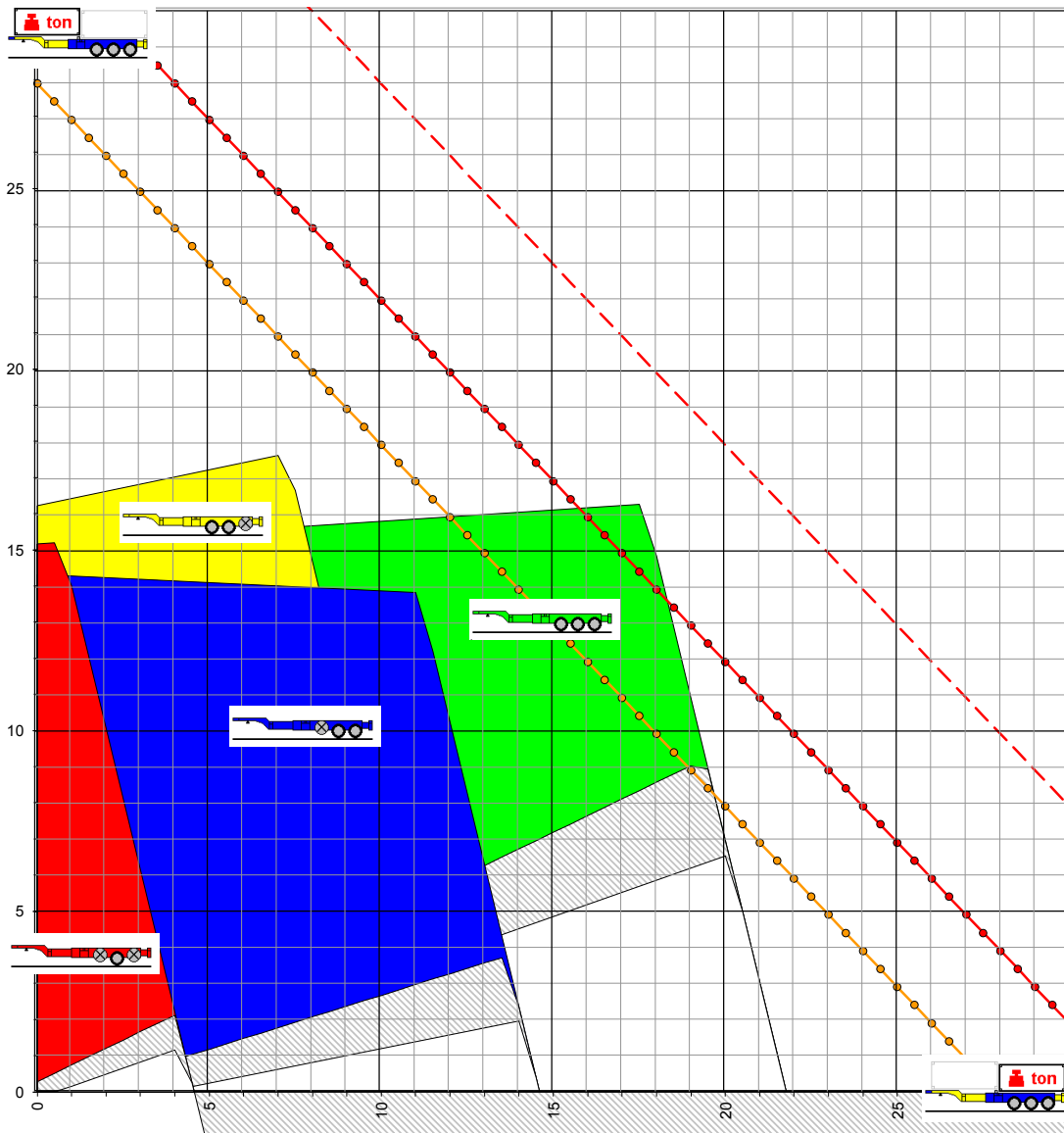
- Weight truck: 7 ton
- Maximum fifth wheel truck: 12 ton
- Maximum axle load trailer: 9 ton
- Minimum fifth wheel: 20% from the total loaden weight of the trailer.

	maximum for 50 ton
	maximum for 44 ton
	maximum for 40 ton
	all axles down
	axle 1 lifted
	axle 3 lifted
	axle 1, 3 lifted



Transporting 1x 20ft container	
	Max 35 ton
	Max 18 ton (axle 1 lifted)

This information is the property of D-TEC Containertrailers BV, Hogevelde 5a, 4041 CP, Kesteren, The Netherlands. Tel. +31 488 410 864. This information is for indication. No rights are served from this information.



Loading instructions for 20' containers on the Flexitrailer®

E

**EUROFLEX, 6x2 truck Legenda**

**User instruction**

- > The conditions are mentioned on the right side.
- > The weights in the chart are including the container.
- > This chart is based on equal loaden containers.

1. Define the weight of the container on the **front** part. From this point draw a line from the **left** side of the chart to the right.
2. Define the weight of the container on the **rear** part. From this point draw a line from the **bottom** of the chart upward.
3. The crosspoint gives you the instruction which axle must be **lifted**.

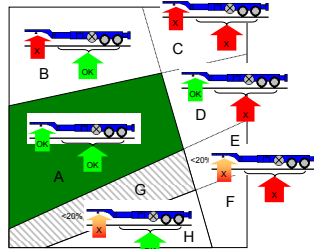
**Please take notice!** (see also the example chart, right):

- Above area B and C: **fifth wheel load too high**.
- On area C till F: **axle load too high**.
- In the area G and E: **fifth wheel load too low** to drive safety.
- In the area H and F: **fifth wheel load much too low** to drive safety.

**Conditions**

- Weight truck: 7 ton
- Maximum fifth wheel truck: 16 ton
- Maximum axle load trailer: 9 ton
- Minimum fifth wheel: 20% from the total loaden weight of the trailer.

	maximum for 50 ton
	maximum for 44 ton
	maximum for 40 ton
	all axles down
	axle 1 lifted
	axle 3 lifted
	axle 1, 3 lifted



**Transporting 1x 20ft container**

	Max 35 ton
	Max 18 ton (axle 1 lifted)

This information is the property of D-TEC Containertrailers BV, Hogeveldeweg 5a, 4041 CP, Kesteren, The Netherlands. Tel. +31 488 410 864. This information is for indication. No rights are served from this information.

